



**MOS**  
Mobile Ordering System

Programming  
Manual

**QUORION**  
Data Systems GmbH

**INDEX**

**CABLE LAYOUT ECR – BASE STATION..... 3**

**CONTROLLER VERSION ..... 3**

**CONTROLLER FLASH UPDATE ..... 3**

**HANDHELD VERSION ..... 3**

**HANDHELD FLASH UPDATE ..... 4**

**ACTIVATING DK HANDHELD..... 4**

**QMP APPLICATION PROGRAM SETTINGS..... 5**

**CLERK PIN ON THE HANDHELD ..... 5**

**HANDHELD SETUP ..... 5**

**HANDHELD RESET ..... 5**

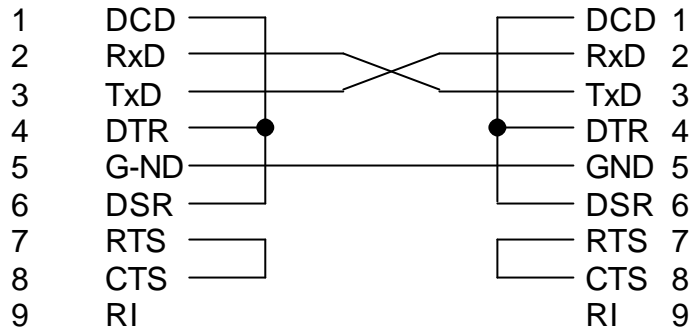
**HANDHELD PARAMETERS ..... 6**

**HANDHELD OPERATIONS..... 7**

- START NORMAL TRANSACTION.....7
- START REFUND TRANSACTION .....7
- ENTER ARTICLES .....7
- ENTER MODIFIERS .....7
- CORRECT LAST ENTRY .....7
- CLOSE TRANSACTION .....7
- DISPLAY TRANSACTION SUBTOTAL .....7
- REQUEST LIST OF OPEN TABLES .....7
- REQUEST A SPECIFIC TABLE TOTAL AMOUNT .....7
- REQUEST A SPECIFIC TABLE ITEM LIST.....7
- PRINT INVOICE TYPE1 AND CLOSE TABLE ON CASH.....7
- PRINT SUBTOTAL INVOICE TYPE1 AND CLOSE TABLE ON NEW BALANCE .....8
- PRINT INVOICE TYPE2 AND CLOSE TABLE ON CASH.....8
- SPLIT TABLE AND PRINT INVOICE TYPE1 AND CLOSE ON CASH.....8
- TRANSFER A TABLE TO ANOTHER TABLE .....8
- SIGN OFF ACTIVE CLERK .....8
- SIGN ON CLERK .....8

## CABLE LAYOUT ECR – BASE STATION

- Parameters of the RS-232C Interface:
  - Data format: 1 start bit, 8 data bit, 1 stop bit, no parity
  - Data rate: 9600 Baud
  
- Pin description:                    ECR (D-Sub female 9pins)                    mtEM (D-Sub female 9pins)



## CONTROLLER VERSION

- When the handheld is initialized the register will print and display the version information received from the controller.
- The software version should be “QR V10.0c 06.01.04 00000001” or newer.

## CONTROLLER FLASH UPDATE

- Connect BASE STATION to the Computer.
- Start HYPERTERMINAL
- Make direct connection to COMx port and set to 8,N,2, NO HANDSHAKING and NO ECHO
- In HyperTerminal type (in CAPITAL): H
- HyperTerminal Display shows R.
- In HyperTerminal type (in CAPITAL including > and < ): >\*UPDATE<
- In HyperTerminal Display Shows:
  - “Bitte Empfaenger neu starten!”
- Power Off/On BASE station
- In HyperTerminal Display Shows:
  - Loader V1.0p
- Send TEXT File Emxxxx.TXT
- HyperTerminal shows:
  - “-----mEM1”
- HyperTerminal shows progress by displaying ‘\*\*\*\*\*’ ...
- Wait until HyperTerminal shows FERTIG (Takes 6-7 minutes)
- Power Off/On BASE station

## HANDHELD VERSION

- Enter 9999 on the TISCH key and the Handheld will display an Information screen.
- The software version should be “V19.0d”
- This version will not check if the table is allowed to be opened.
- This version doesn’t set all the Handheld Parameters automatically so they should be SET manually.
  - Kellner-Code        J/N    - (must be ‘J’) Clerk sign on active using PIN code.
  - DIVERS1-NR        0      - Set to 0.
  - DIVERS2-NR        0      - Set to 0.
  - DIVERS2-NR        0      - Set to 0.
  - DIVERS2-NR        0      - Set to 0.

## HANDHELD FLASH UPDATE

- Connect BASE STATION to the Computer.
- For KEYBOARD HANDHELD connect CHARGE STATION to the BASE STATION
- For TOUCH HANDHELD connect Handheld directly to BASE STATION
- Start HYPERTERMINAL
- Make direct connection to COMx port and set to 8,N,2, NO HANDSHAKING and NO ECHO
- Switch on the handheld keeping the F1 (TISCH) key depressed.
- Enter the PIN code 66130.
- Select Program Update and enter 1
- Confirm by entering 1234 and push key
- Switch on Handheld (Note that display stays BLANK)
- For KEYBOARD HANDHELD put handheld in CHARGE STATION
- In HyperTerminal type (in CAPITAL): H
- HyperTerminal Display shows R.
- In HyperTerminal type (in CAPITAL including > and < ): >\*TMODE<
- In HyperTerminal Display Shows:
  - "Transparent-Mode aktiv!"
  - "Bitte Handy zum Update vorbereiten"
  - "Wenn bereit, mit beliebiger Taste weiter..."
- In HyperTerminal press any key when ready.
- In HyperTerminal Display Shows: "Op-mtHT1/512k" for KEYBOARD HANDHELD
- In HyperTerminal Display Shows: "Op-mtTH2/512k" for TOUCH HANDHELD
- In HyperTerminal Select Transmit TEXT File.
- Send TEXT File TH2\_xxxx.TXT for Touch Handy Version mtTH2 (Version can be found on the backside)
- Send TEXT File TH3\_xxxx.TXT for Touch Handy Version mtTH3 (Version can be found on the backside)
- Send TEXT File KH\_xxxx.TXT for Keyboard Handy
- HyperTerminal shows:
  - "-----mHT1" (for keyboard handheld)
  - "-----mTH2" (for touch handheld)
- HyperTerminal shows progress by displaying '\*\*\*\*\*' ...
- Wait until HyperTerminal shows FERTIG (Takes 16-17 minutes)
- When ready switch on Handheld
- Handheld shows RAM INITIALISIEREN
- Power Off/On base station
- Re-program Handheld with User data

## ACTIVATING DK HANDHELD

- Be sure you have the QMP 'Premium' version installed in the register. You can check this by printing the configuration (305 on TYPE). It should print "BOOTBLOCKVERS. 2"
- Program PORT# to which the base-station is connected in PARAMETER 101.
- Program BAUDRATE and WORDSIZE to 9600,8,N,1 for the PORT used.
- Connect BASE STATION to the QMP register.
- Connect CHARGE STATION to the BASE STATION
- Press F1 key on base-station (yellow led lights).
- Enter 9000 on the TYPE key to sent the Articles, Department and Modifiers to the base-station. QMP operator display will show data being sent.
- Switch ON Handheld.
- Enter 1000 on the TISCH key.
- Put Handheld in charge station.
- Data is sent to Handheld. On bottom of handheld screen progress is shown and when finished main screen is shown and the register will issue a ticket on the Receipt Printer when active.
- Press F1 key on base-station (yellow led out).
- Ready for operation.

## QMP APPLICATION PROGRAM SETTINGS

- Maximum Number of tables is 999 and numbering is from 1 to 999 (No Random Number or Free Numbers!)
- Maximum number of articles is 2500 but it depends on the number of Modifiers. The total of Articles and Modifiers is MAX 2500. When initialising the Handheld the register will FIRST sent the MODIFIERS and then the remaining articles. This means that when you have 2000 articles and 999 modifiers the register will sent 999 modifiers and 1501 articles to the handheld when initialised.
- Maximum number of Modifiers is 999 but it depends on the number of articles. The total of Articles and Modifiers is MAX 2500. See also Max Articles.
- Maximum number of Department is 64 (fixed).
- Maximum number of Clerk Codes is 99.
- Text sizes used by the handheld are maximum 16 characters.
- Avoid using characters '>', '<', ';', '/' in the texts.
- General Message# 79 is used to display "Handheld Init".
- Balance Function# 1 must be programmed as OPEN/CLOSE TABLE.
- Balance Function# 4 must be programmed as INVOICE TYPE 2.
- Balance Function# 5 must be programmed as INVOICE TYPE 1.
- Balance Function# 6 must be programmed as SPLIT TABLE.
- Balance Function# 7 must be programmed as TRANSFER TABLE.
- Correction Function# 3 must be programmed as REFUND.

## CLERK PIN ON THE HANDHELD

- When using SECRET CLERK codes or a DALLAS clerk lock the register will use the last four digits of the Secret Clerk code as PIN code for the Handheld. In case the code contains hexadecimal digits they are replaced by 0. The secret code 65B9A87 will result in a PIN code of 9087 on the handheld.
- It is also possible to use the SIGNON CODE of the Clerk as PIN code for the Handheld. You must activate the SignOn code in the clerk configuration and program the codes. Note that hexadecimal digits are also replaced by 0 when using the SignOn code.
- When using NO secret codes the register will automatically use PIN codes which are the same as the CLERK number so clerk 1 will have PIN 1, CLERK 2 has PIN 2, etc.
- When using the option CLERK FIXED TO BALANCE on the register you should also set the option "Tisch-Anfrage J/N" to 'J' on the handheld so it will ask the table status before an order can be entered. When NOT set the handheld will ALWAYS have MANAGER authority so it can order on any table.
- When the handheld selects a clerk which doesn't exist the order is automatically booked on Clerk#1 so the order is not lost.

## HANDHELD SETUP

- Switch on the handheld keeping the F1 (TISCH) key depressed.
- Enter the PIN code 66130.
- When using more than 1 handheld you should give them each an unique number. The numbering (HT-NR) starts from 2. Default you can connect maximum 4 handhelds to one base station. When more is needed it should be specified when ordering the system. The maximum is 9 handhelds to 1 base station.

## HANDHELD RESET

- When the handheld is blocked it is possible to make a reset by moving a magnet on the left side of the keyboard of the handheld.

## HANDHELD PARAMETERS

- Tastenbeep J/N - (default 'J') When 'J' beep when key pressed.
- Fehlerbeep J/N - (default 'J') When 'J' beep when entry error.
- RAM Clear J/N - (default 'N') When 'J' reset Handy to default demo program.
- Land D/E - (default 'D') D=German, E=English, S=Spanish, G=Greek.
- Demoversion J/N - (default 'N') When set no transmission of orders.
- NSTO J/N - (default 'J') When set refund is possible.
- Revierzuweisung J/N - (must be 'N') Not Used with Protocol 1.
- Volle Chip-Nr J/N - (must be 'N') Not Used.
- WGR-Suchen J/N - (default 'J') When 'J' look up by department list.
- Akkuwarnung J/N - (default 'J') Give warning when battery is low.
- Kellner-Code J/N - (must be 'J') Clerk sign on active using PIN code.
- NSTO m.Rueckruf J/N - (default 'J') Handy gets item list from register for corrections.
- Tisch-Anfrage J/N - (default 'N') When starting a sale the handheld ask the table balance.
- Freie ArtikelNr J/N - (default 'N') Not used.
- Text-Suchen J/N - (default 'N') When 'J' look up by text.
- MAX ARTIKEL 2500 - Maximum number of PLU is set by register during INIT.
- MAX BEILAGEN 999 - Maximum number of Modifier is set by register during INIT.
- MAX TISCHNR. 999 - Maximum number of Tables is set by register during INIT.
- MAX BUCHUNG 100 - (default 100) Maximum size of 1 order.
- KNNR HIGH 0 - Handheld Active Clerk ID
- KNNR LOW 2 - Handheld Active Clerk ID
- HTNR.HIGH 0 - (default 0) Handheld ID Number
- HTNR.LOW 2 - (default 2) Handheld ID Number (2 – 5)
- KOMMASTELLEN 2 - (default 2) Number of decimals in amounts on Handheld
- DIVERS1-NR 0 - (default 0) Not used.
- DIVERS2-NR 0 - (default 0) Not used.
- DIVERS3-NR 0 - (default 0) Not used.
- DIVERS4-NR 0 - (default 0) Not used.
- In Suche Bleib J/N - (default N) When set the PLU Lookup screen stays open.
- Zi-Anf.v.vRechn. J/N - (must be 'N') Not used.
- Zi-Rechnung J/N - (must be 'N') Not used.
- Doppelklick J/N - (default 'N') Double click on Touch Handheld when ZEILEN-SCROL is 'J'
- Gast Sperren J/N - (must be 'J') Not Used.
- Rechnungwahl 0 - (must be 0) Not Used.
- Raumbild J/N - (must be 'N') Not Used.
- ArtikelRueckruf J/N - (default 'J') Get Detailed Bill Info from register.
- Separieren J/N - (default 'J') Split Bill allowed.
- Ti/Ga Wechsler J/N - (default 'J') Table Change is allowed.
- Kelner anmelden J/N - (must be 'N') Not Used.
- Erweit.Rueckruf J/N - (default 'J') Ask for the next article range incase order > 18 items.
- ProgramUpdate J/N - (default 'N') Only used for FLASH update in Handheld.
- FREIE NR SEND J/N - (default 'N') Not used.
- PROTOKOLL-TYP 1 - (default 1) Only protocol type 1 is supported.
- ZEILEN-SCROL J/N - (default 'J') Use arrow keys for selection.
- BEL-AUSZEIT 20 - (default 20sec) Backlight off timer.
- HT-AUSZEIT 30 - (default 30sec) Handheld off timer.
- KONTRAST 30 - (default 30) Display Contrast Setting.

## HANDHELD OPERATIONS

- **Start Normal Transaction**
  - Switch on Handheld by pressing ARROW DOWN key or the button on the back.
  - Enter the TABLE number and press the TISCH key or button on the back.
- **Start Refund Transaction**
  - Switch on Handheld by pressing ARROW DOWN key or the button on the back.
  - Press X key and press ENTER key or button on the back to Confirm.
  - Display Show "\*\*\*\*N-STO\*\*\*\*".
  - Enter the TABLE number and press the TISCH key or button on the back.
- **Enter Articles**
  - Enter the article number (1) and press the ENTER key or button on the back.
  - Press the X key and select Article Group using arrow keys, confirm by ENTER or button on the back, select Article and confirm by the ENTER key or button on the back.
- **Enter Modifiers**
  - Enter the modifier number preceded by ZERO (01) and press the ENTER key or button on the back.
  - Press the X key, press the ARROW UP key, select the modifier using arrow keys and confirm by the ENTER key or button on the back.
- **Correct Last Entry**
  - When the CLEAR key is pressed the LAST ENTRY is CORRECTED.
- **Close Transaction**
  - Press the SEND key to transmit the order to the register.
  - The transaction is sent to the register. When the register is already in transaction the open transaction will be automatically closed after 30 seconds of no operation and the handheld transaction is processed.
- **Display Transaction Subtotal**
  - By pressing the ENTER or button on the back the display mode switches from displaying article with number, nothing or with prices and the transaction subtotal amount.
- **Request List of Open Tables**
  - Press the SEND key without entry.
  - Now the Open Table list is requested from the register and displayed. When there are no open tables ERROR MESSAGE# 36 is displayed. When in the register BALANCE FIXED to clerk is set only the tables for the active clerk are displayed.
- **Request a Specific Table Total Amount**
  - Enter the TABLE number and press the SEND key OR
  - Enter the TABLE number on the TISCH key and the press the SEND key without entry, select option 3 by pressing the ENTER key or the button on the back.
  - Now the Table Balance is requested from the register and displayed. When the table is not open yet the balance is ZERO.
- **Request a Specific Table Item List**
  - Enter the TABLE number and press the TISCH key or button on the back.
  - Press the ENTER key without entry.
  - Now the Table Items are requested from the register and displayed. When the table is not open yet a communication error will be given. Note that the maximum items displayed are 18 when the option "Erweit.Rueckruf J/N" is set to N in the handheld.
- **Print Invoice Type1 and Close Table on Cash**
  - Enter the TABLE number and press the TISCH key or button on the back.
  - Press the SEND key without entry.
  - Select option 1 by pressing the ENTER key or the button on the back.

- **Print Subtotal Invoice Type1 and Close Table on New Balance**
  - Enter the TABLE number and press the TISCH key or button on the back.
  - Press the SEND key without entry.
  - Select option 8 by pressing the ENTER key or the button on the back.
- **Print Invoice Type2 and Close Table on Cash**
  - Enter the TABLE number and press the TISCH key or button on the back.
  - Press the SEND key without entry.
  - Select option 2 by pressing the ENTER key or the button on the back.
- **Split Table and Print Invoice Type1 and Close on Cash**
  - Enter the TABLE number and press the TISCH key or button on the back.
  - Press the SEND key without entry.
  - Select option 4 by pressing the ENTER key or the button on the back.
  - Now the Table Items are requested from the register and displayed. When the table is not open yet a communication error will be given. Note that the maximum items displayed are 18.
  - Select Item from the list and enter the quantity on the X key.
  - Press the SEND button.
- **Transfer a TABLE to another Table**
  - Enter the TABLE number and press the TISCH key or button on the back.
  - Press the SEND key without entry.
  - Select option 5 by pressing the ENTER key or the button on the back.
  - Enter the new table# and press the TISCH key. (note that the table is ALWAYS transferred also when already occupied by another clerk.
  - Press the SEND button.
- **Sign OFF active Clerk**
  - Enter the 0 and press the TISCH key or button on the back.
  - The handheld will switch off and ask the CLERK PIN when switched on the next time.
- **Sign ON Clerk**
  - Switch in the Handheld.
  - Enter the PIN and press the ENTER key.
  - When the PIN is valid the clerk will be signed on until signed off again.